

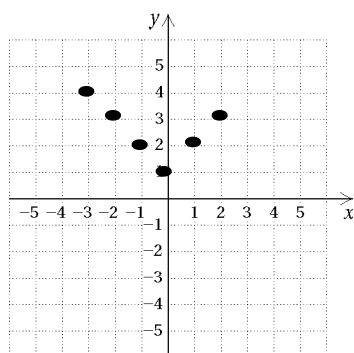
**EXTRA PRACTICE 13**  
**Finding Domain and Range**  
 Use after Section 2.3

Name \_\_\_\_\_

The solutions of an equation in two different variables consist of a set of ordered pairs. The domain is the set of all first coordinates and the range is the set of all second coordinates.

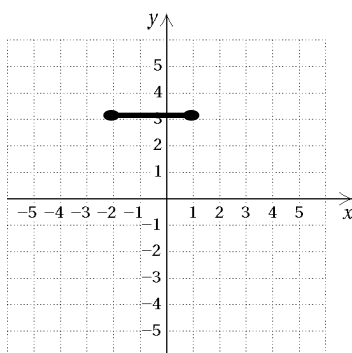
Find the domain and the range of each of the following functions.

1.



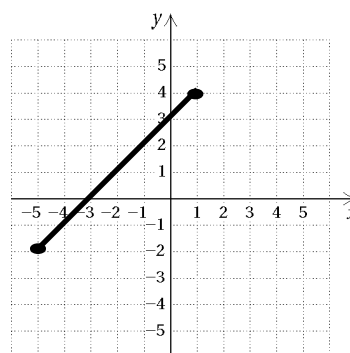
Domain:  
Range:

2.



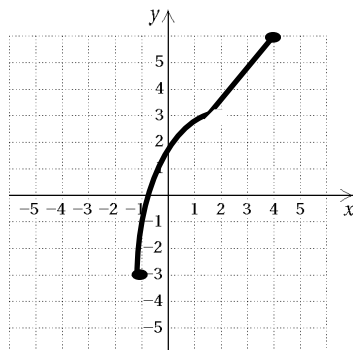
Domain:  
Range:

3.



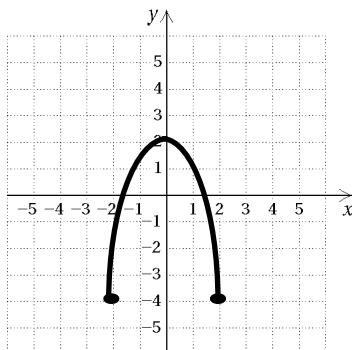
Domain:  
Range:

4.



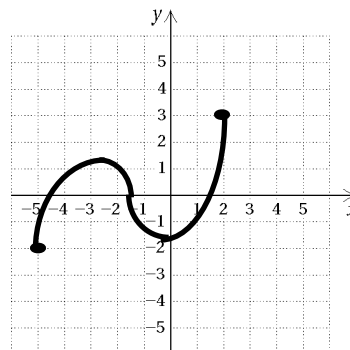
Domain:  
Range:

5.



Domain:  
Range:

6.



Domain:  
Range:

Find the domain.

7.  $f(x) = \frac{5}{x-2}$

8.  $f(x) = 3 - 2x$

9.  $f(x) = x^2 - 4$

10.  $f(x) = \frac{4}{6x-5}$

11.  $f(x) = \frac{x-1}{2x+3}$

12.  $f(x) = |x| + 1$

13.  $f(x) = |x - 3|$

14.  $f(x) = \frac{-7}{3+x}$

15.  $f(x) = x^2 - 4x - 5$